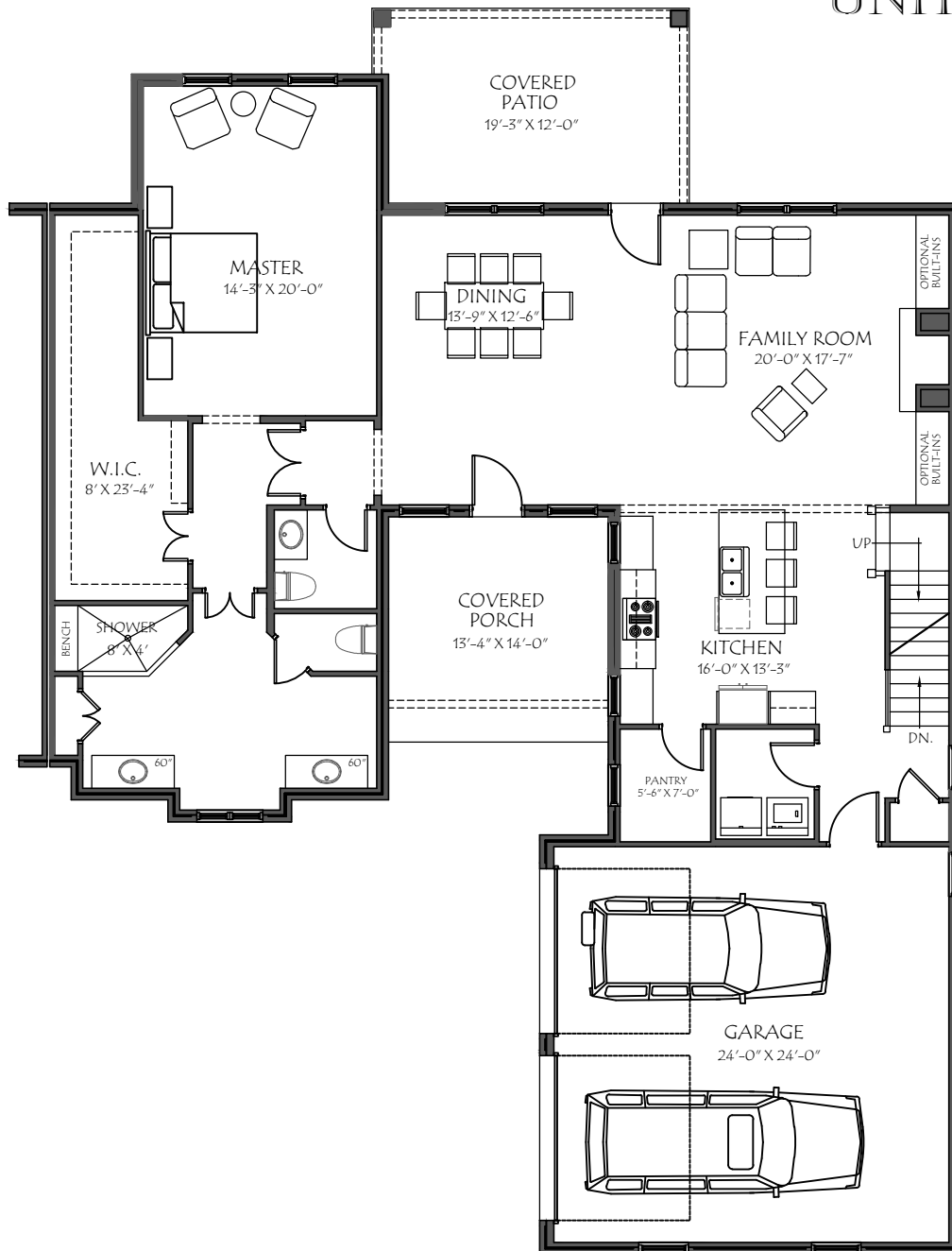


# ANDOVER VILLAS



## - THE CYPRESS POINT - UNIT #19



### GROUND FLOOR PLAN



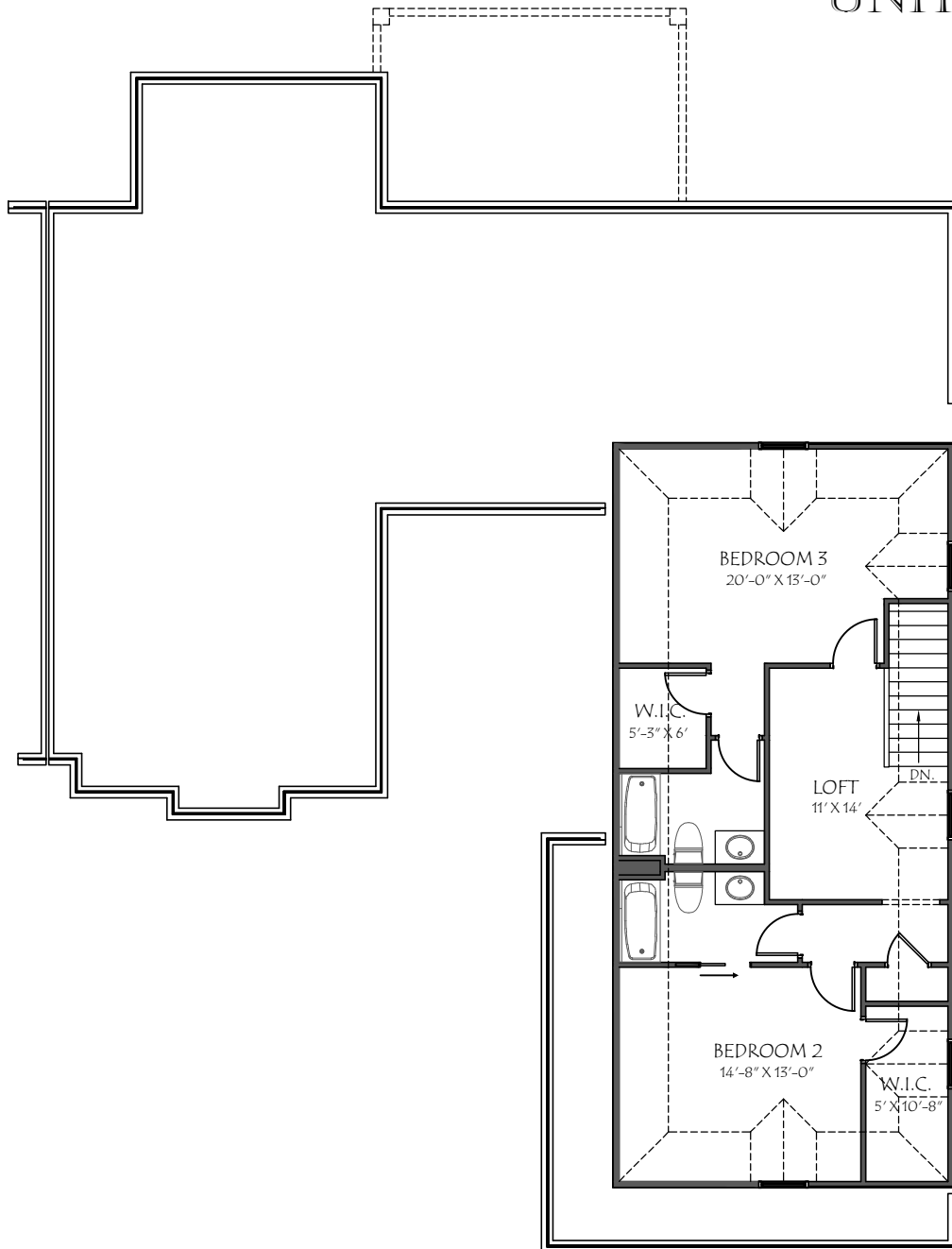
GROUND FLOOR AREA = 1,880 SQ. FT.  
UPPER FLOOR AREA = 886 SQ. FT.  
TOTAL LIVING AREA = 2,766 SQ. FT.

3/30/2020

# ANDOVER VILLAS



## - THE CYPRESS POINT - UNIT #19



### UPPER FLOOR PLAN



GROUND FLOOR AREA = 1,880 SQ. FT.  
UPPER FLOOR AREA = 886 SQ. FT.  
TOTAL LIVING AREA = 2,766 SQ. FT.

3/30/2020